

Site Learning Plan | 2026

Challenging every student to learn, achieve and flourish

At Woodville Primary School, we believe in fostering an inclusive and respectful community where every student is valued and challenged to learn, achieve, and flourish.

We are committed to:

High expectations for all learners—supporting and extending every student so they become confident thinkers, creators, and inventors of their own future,

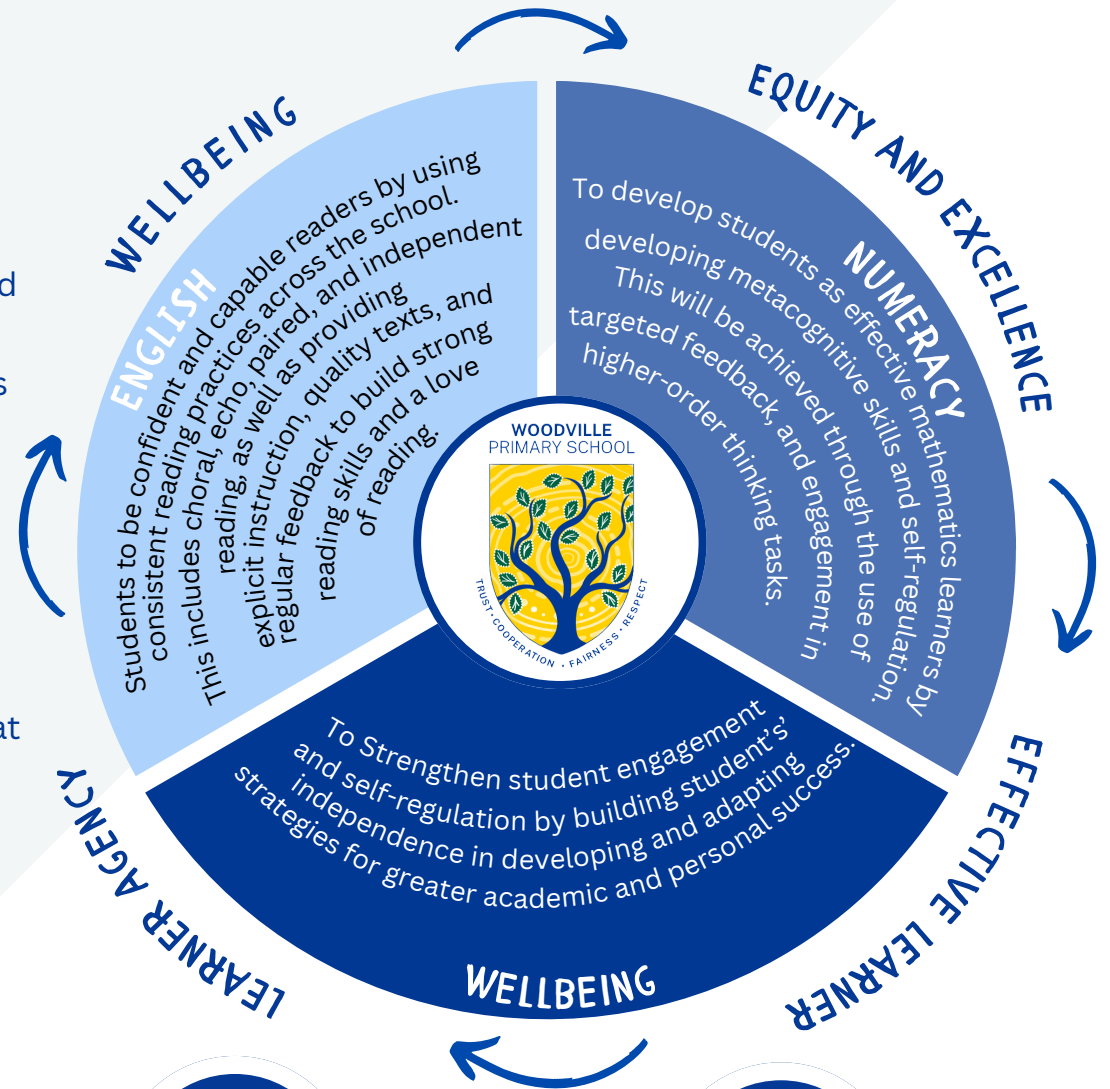
A safe and supportive environment—ensuring every child feels secure, encouraged, and able to take risks in their learning,

Respect and belonging—valuing diversity and promoting positive relationships among all members of our school community,

Active community engagement—building strong partnerships with families and the wider community,

Equity and inclusion—celebrating differences and ensuring that all students have access to rich and meaningful educational opportunities.

Together, we empower our students to embrace challenges, pursue their passions, and build the skills and attitudes they need to thrive, now and into the future.



Trust



Respect



Cooperation



Fairness

Student Implementation Indicators

ENGLISH

Students will:

- be actively involved in reading activities, including group discussions and comprehension tasks by participating enthusiastically in all reading practices, such as choral reading, echo reading, paired reading, and independent reading sessions.
- apply teacher feedback to improve their reading accuracy, fluency, and comprehension and set personal reading goals and regularly reflect on their progress.
- identify and use effective strategies that support their development as readers.
- Use reading strategies taught in class to tackle unfamiliar words and texts.
- Discuss favourite books and genres, sharing reasons for their preferences.

MATHEMATICS

Students will:

- Demonstrate the use of metacognitive strategies (plan, monitor, evaluate) their learning.
- Identify their strengths and challenges
- Engage in lots of purposeful learning talks with their peers and teachers.
- Engage in higher-order thinking activities such as problem solving, justifying answers, and collaborating with peers.
- Stop and think about what is needed to achieve the learning task.
- Actively seek, accept and respond to feedback, using it to adjust their answers.
- Know the next steps to their learning goal.

WELLBEING

Students will:

- Have a positive sense of self and know their strengths and areas of development.
- Feel and know how to be successful.
- Feel supported to have a go and persevere with new and complex learning.
- Have a positive sense of self and know their strengths and areas of development.
- Contribute to a safe and supportive environment by following the agreed school and classroom routine consistently.
- Demonstrate greater independence in managing and adjusting their learning by identifying their triggers, utilising strategies from their Ready to Learn Plans, and effectively regulating their emotions. Provide feedback on routines and school practices, suggesting improvements where appropriate